

Coronnium®

Cobalt Chromium Coronary Stent System

Designed for enhanced deliverability
and distal lesion access

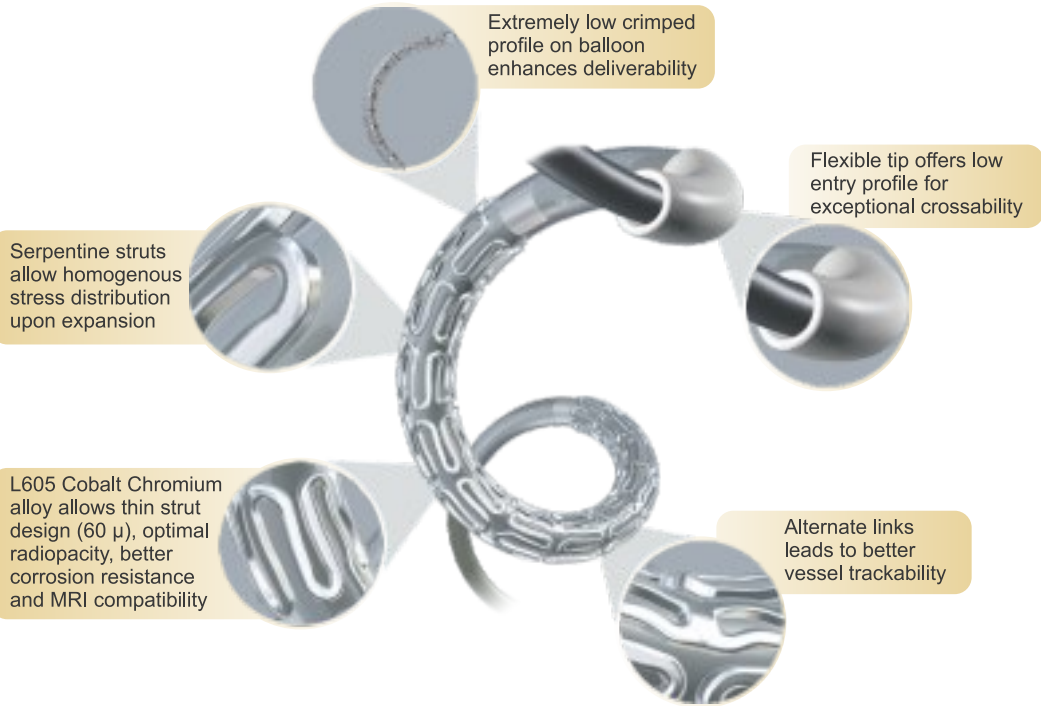


**SAHAJANAND MEDICAL
TECHNOLOGIES PVT. LTD.**

delivering science to life

CE
0434

Design Characteristics

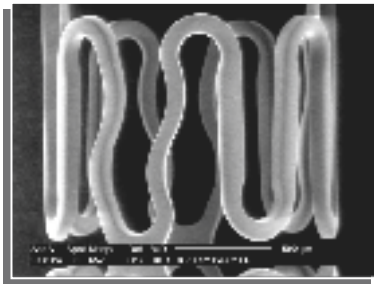


Specifications

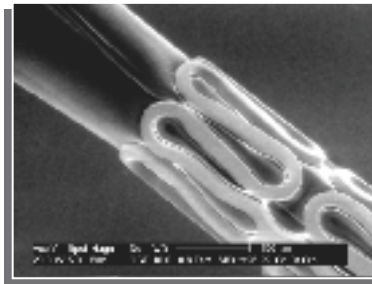
Device Component Description	
Available Stent Lengths	8, 12, 16, 20, 24, 28, 32, 36, 40 mm
Available Stent Diameters	2.50, 2.75, 3.00, 3.50 mm (6-Crown)
Stent Material	Surgical Grade L605 Co-Cr alloy
Stent Design	Laser cut from seamless tubing in a serpentine pattern
Stent Strut Thickness	0.06 mm (60 μ)
Nominal Stent Foreshortening	< 3 %
Recoil	< 4 %
Delivery System Usable Length	1400 mm (140 cm)
Delivery System Y - Adapter Ports	Single access port to inflation/deflation lumen. A guidewire exit port is located at 25 cm from the tip. Designed for guidewire 0.014".
Catheter Shaft Outer Diameter	Proximal : 0.60mm Distal : 0.84mm for Ø(2.5-3.5) & 0.95mm for Ø ≥ 4.0
Balloon Inflation Pressure	*Nominal Pressure : 6 bar Rated Burst Pressure : 16 bar
Guide Catheter	5 Fr compatible
Guidewire Diameter	0.014 inch

* Assure full deployment of the stent. Deployment pressures should be based on lesion characteristics.
Note: 1F is equivalent to 0.33mm. 1 atm = 1.01 bar

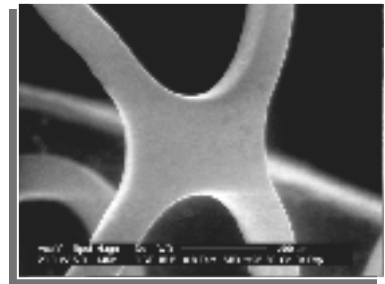
SEM Images of Coronium® Coronary Stent System



Normal Stent



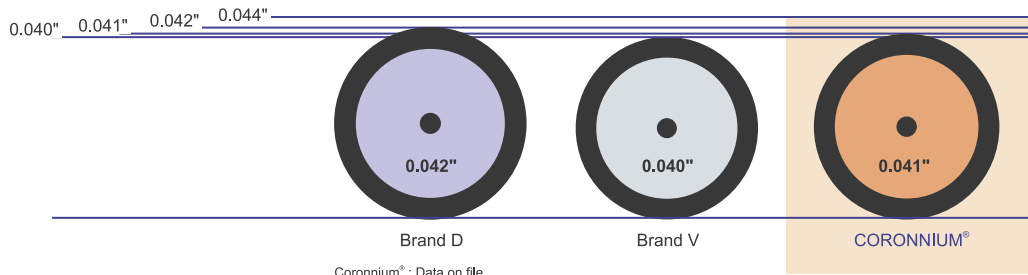
Crimped Stent



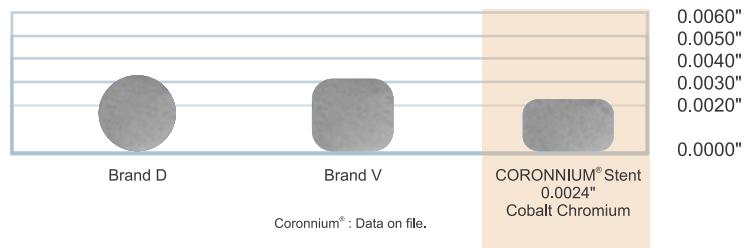
Expanded Stent

- Scanning Electron Microscopic Images of Coronium® stent showing smooth Inner and outer surface.

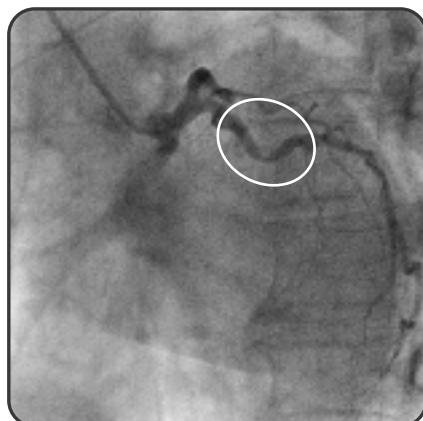
Crossing Profile



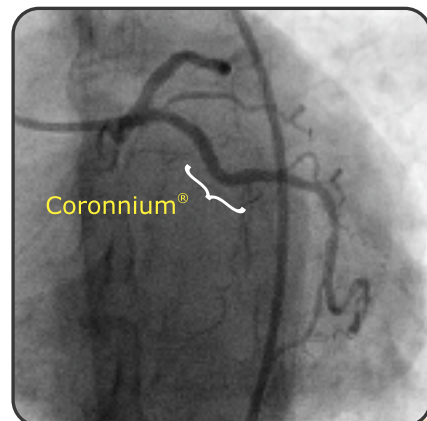
Strut Thickness



Proof of enhanced deliverability and conformability



Pre Procedure



Post Procedure

Coronium® has negotiated an acute bend successfully and deployed without straightening the artery showing high degree of conformability.

Ordering Information

Reference No.	Stent Length / Diameter (mm)	Balloon Length (mm)	Reference No.	Stent Length / Diameter (mm)	Balloon Length (mm)
05080250CC	08/2.50	09	05240300CC	24/3.00	25
05080275CC	08/2.75	09	05240350CC	24/3.50	25
05080300CC	08/3.00	09	05280250CC	28/2.50	29
05080350CC	08/3.50	09	05280275CC	28/2.75	29
05120250CC	12/2.50	13	05280300CC	28/3.00	29
05120275CC	12/2.75	13	05280350CC	28/3.50	29
05120300CC	12/3.00	13	05320250CC	32/2.50	33
05120350CC	12/3.50	13	05320275CC	32/2.75	33
05160250CC	16/2.50	17	05320300CC	32/3.00	33
05160275CC	16/2.75	17	05320350CC	32/3.50	33
05160300CC	16/3.00	17	05360250CC	36/2.50	37
05160350CC	16/3.50	17	05360275CC	36/2.75	37
05200250CC	20/2.50	21	05360300CC	36/3.00	37
05200275CC	20/2.75	21	05360350CC	36/3.50	37
05200300CC	20/3.00	21	05400250CC	40/2.50	41
05200350CC	20/3.50	21	05400275CC	40/2.75	41
05240250CC	24/2.50	25	05400300CC	40/3.00	41
05240275CC	24/2.75	25	05400350CC	40/3.50	41

Not available for sale in USA

Compliance Chart

Pressure [bars]	2.50 mm	2.75 mm	3.00 mm	3.50 mm
6	2.50	2.75	3.00	3.50
8	2.56	2.82	3.07	3.58
10	2.61	2.87	3.13	3.65
12	2.65	2.92	3.18	3.71
14	2.70	2.97	3.24	3.78
16	2.75	3.03	3.30	3.85
18	2.80	3.08	3.36	3.92

1 atm = 1.01 bar

Nominal Pressure (NP)
 Rated Burst Pressure (RBP)



**SAHAJANAND MEDICAL
TECHNOLOGIES PVT. LTD.**

ISO 13485 • ISO 9001 • GMP Certified Company

"Sahajanand Estate", Wakhariawadi, Nr. Dabholi Char Rasta,
Ved Road, Surat 395004, Gujarat, INDIA
Tel.: +91 261 3060606 Fax: +91 261 3060607
Email : contact@sahmed.com
Visit us at : www.smtpl.com

Distributed and Marketed by:

