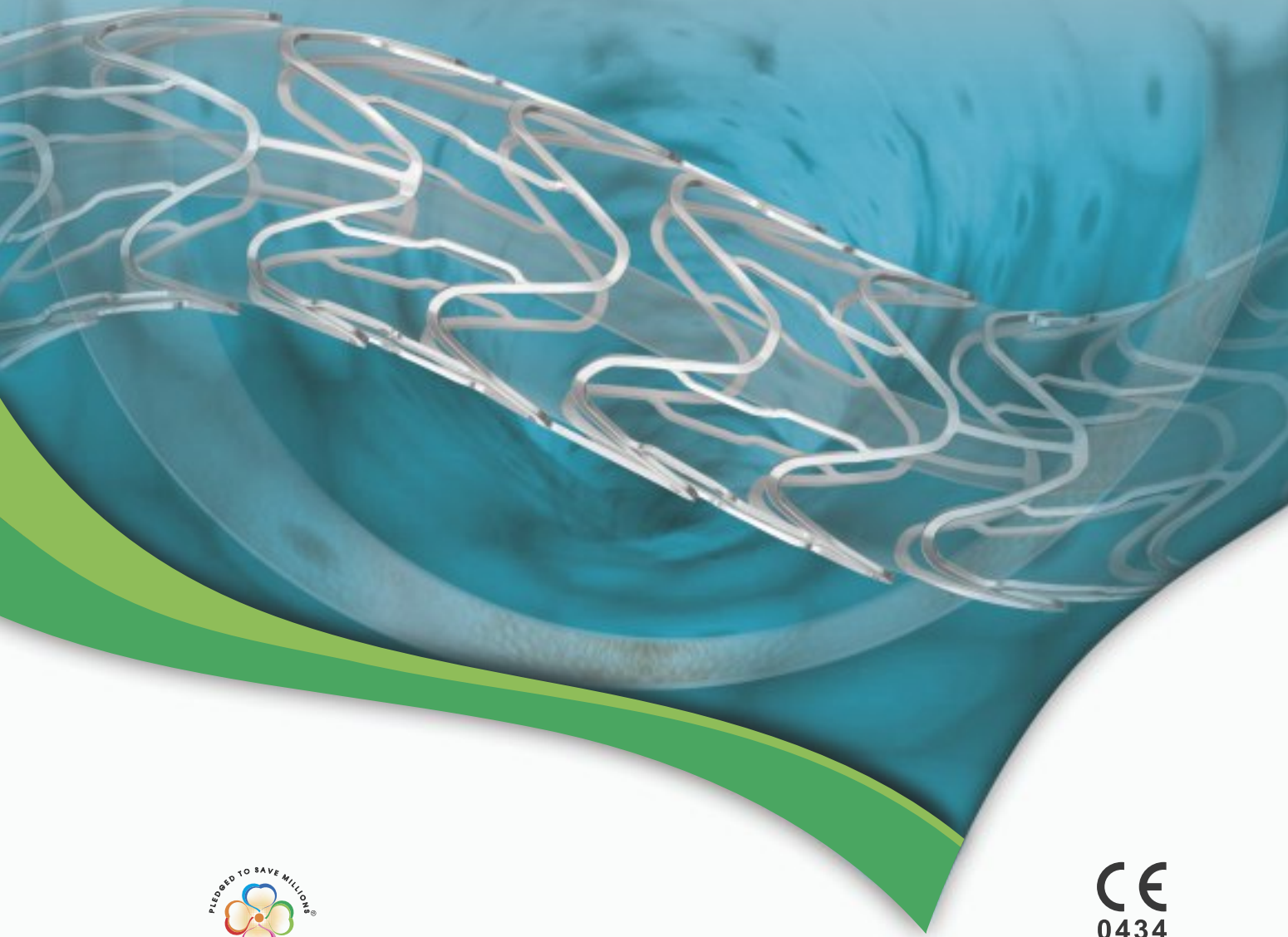


the millennium®
Matrix[®]
Coronary Stent System

for support from now to eternity

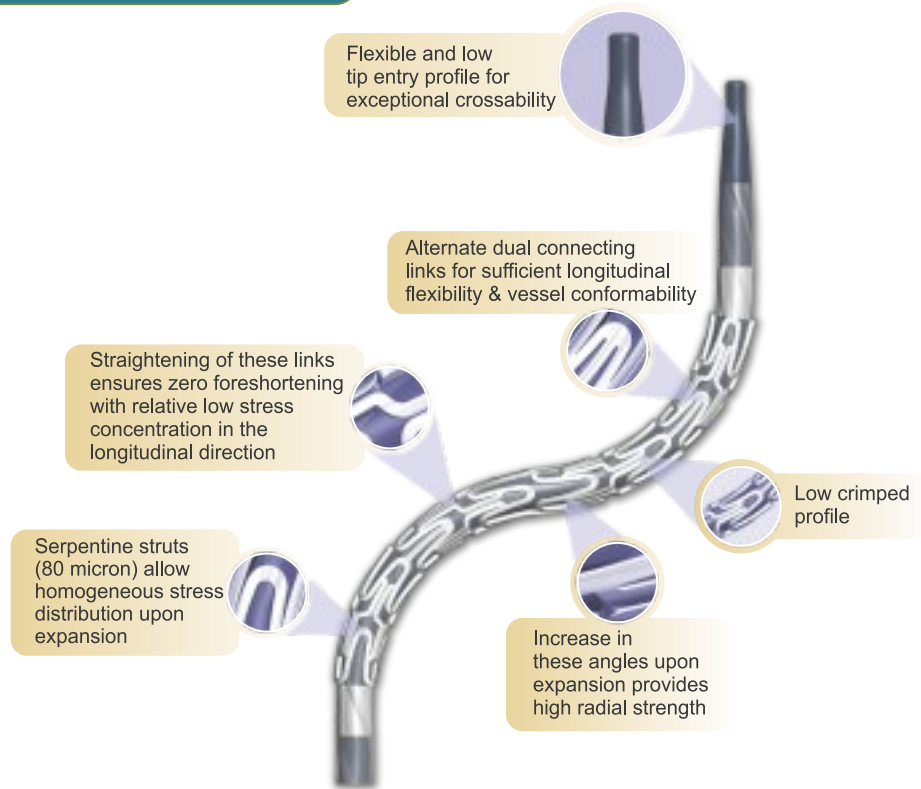


**SAHAJANAND MEDICAL
TECHNOLOGIES PVT. LTD.**

delivering science to life

CE
0434

Design Characteristics

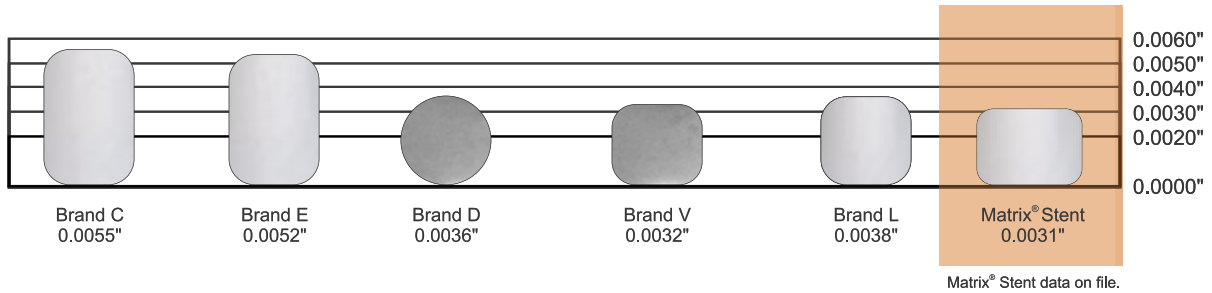


Specifications

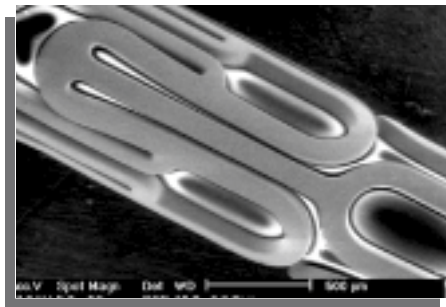
Device Component Description	
Stent Material	Electro polished 316L Stainless Steel (SS)
Stent Design	Laser cut from seamless tubing in a serpentine pattern
Stent Strut Thickness	0.08 mm (80µ)
Average Stent Foreshortening	< 1 %
Average Recoil	< 5 %
Metal to Artery Ratio (φ 3.0mm)	13.1 %
Delivery System Usable Length	1400 mm (140 cm)
Delivery System	Single access port to inflation/deflation lumen. A guidewire exit port is located at 25 cm from the tip. Designed for guidewire 0.38 mm (0.014 inch)
Catheter Shaft Outer Diameter	Proximal: 0.60 mm Distal: 0.84 mm for Ø (2.5-3.5) & 0.95 mm for Ø ≥ 4.0
Balloon Inflation Pressure	*Nominal Pressure: 6 bar Rated Burst Pressure: 16 bar (**14 bar)
Guiding Catheter	5F compatible
Guidewire Diameter	0.014 inch

* Assure full deployment of the stent. Deployment pressures should be based on lesion characteristics.
 **14 bar for vessel diameter 4.0 mm with length >20 mm. Note: 1F is equivalent to 0.33 mm. 1 atm = 1.01 bar

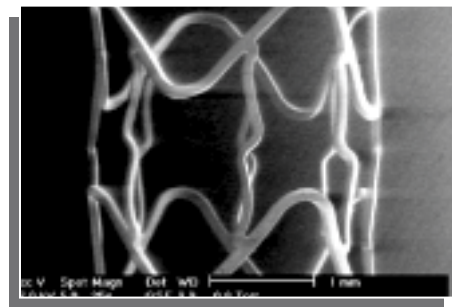
Strut Thickness



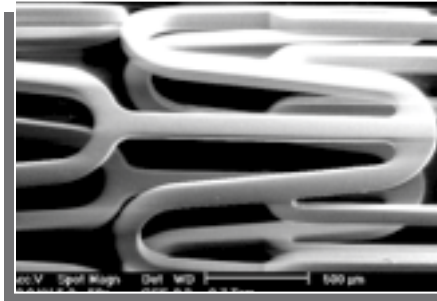
SEM Images of Matrix[®] Coronary Stent System



Crimped stent



Expanded stent

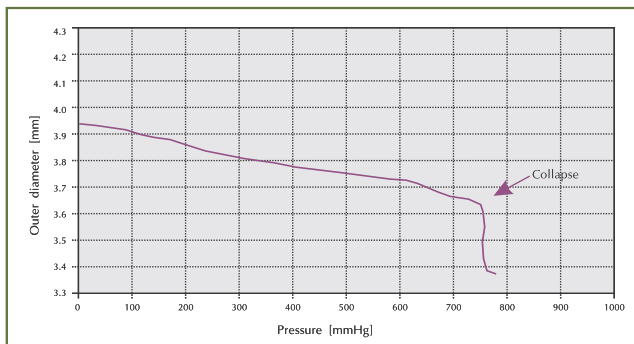


Expanded stent

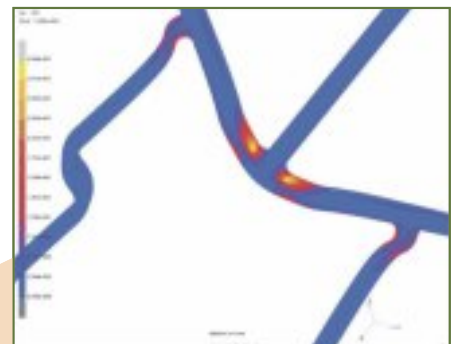
Stent as seen in SEM shows no surface defects and very smooth electropolished surface

RADIAL STRENGTH

The unique design of the Millennium Matrix[®] Stent offers excellent radial strength and minimum recoil even with thinner struts.



Finite Element Analysis
Low stress area upon expansion



(Dilation to 4.00 mm)

Ordering Information

Reference No.	Stent Length / Diameter (mm)	Balloon Length (mm)	Reference No.	Stent Length / Diameter (mm)	Balloon Length (mm)
09110250MX	11/2.50	12	09230350MX	23/3.50	24
09110275MX	11/2.75	12	09230400MX	23/4.00	24
09110300MX	11/3.00	12	09290250MX	29/2.50	30
09110350MX	11/3.50	12	09290275MX	29/2.75	30
09110400MX	11/4.00	12	09290300MX	29/3.00	30
09160250MX	16/2.50	17	09290350MX	29/3.50	30
09160275MX	16/2.75	17	09290400MX	29/4.00	30
09160300MX	16/3.00	17	09330250MX	33/2.50	34
09160350MX	16/3.50	17	09330275MX	33/2.75	34
09160400MX	16/4.00	17	09330300MX	33/3.00	34
09190250MX	19/2.50	20	09330350MX	33/3.50	34
09190275MX	19/2.75	20	09330400MX	33/4.00	34
09190300MX	19/3.00	20	09390250MX	39/2.50	40
09190350MX	19/3.50	20	09390275MX	39/2.75	40
09190400MX	19/4.00	20	09390300MX	39/3.00	40
09230250MX	23/2.50	24	09390350MX	39/3.50	40
09230275MX	23/2.75	24	09390400MX	39/4.00	40
09230300MX	23/3.00	24			

Not available for sale in USA

Compliance Chart

Pressure [bar]	2.50 mm	2.75 mm	3.00 mm	3.50 mm	4.00 mm
6	2.50	2.75	3.00	3.50	4.00
8	2.56	2.82	3.07	3.58	4.09
10	2.61	2.87	3.13	3.65	4.17
12	2.65	2.92	3.18	3.71	4.24
14	2.70	2.97	3.24	3.78	4.32*
16	2.75	3.03	3.30	3.85	4.40
18	2.80	3.08	3.36	3.92	4.48

1 atm = 1.01 bar

Nominal Pressure (NP)
 Rated Burst Pressure (RBP)

* RBP= 14 bar for vessel diameter 4.0 mm with length >20 mm



SAHAJANAND MEDICAL
TECHNOLOGIES PVT. LTD.
ISO 13485 • ISO 9001 • GMP Certified Company

"Sahajanand Estate", Wakhariawadi, Nr, Dabholi Char Rasta,
Ved Road, Surat 395004, Gujarat, INDIA
Tel.: +91 261 3060606 Fax: +91 261 3060607
Email : contact@sahmed.com
Visit us at : www.smtpl.com

Distributed and Marketed by:

